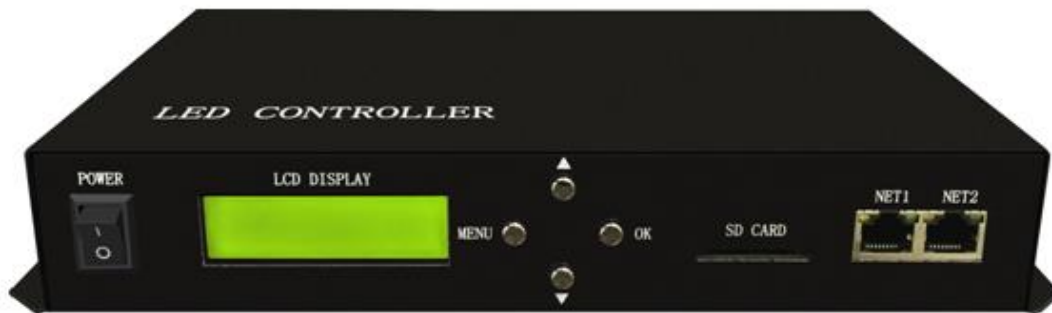


ML-H803TC



1. Features

- (1). ML-H803TC can work with PC(online), SD card(offline) or DMX console.
- (2). ML-H803TC drives maximum **170000** pixels, 2 ports control maximum **255** slave controllers.
- (3). Slave controller is H802RA or ML-H801RC.
- (4). By combining ML-H803TC with H802RA, you can set address for DMX512 chips.
- (5). ML-H803TC transmits signal based on Ethernet Protocol. Max transmission distance from ML-H803TC to slave controller is 100 meters.
- (6). Use four buttons to switch files, set play mode, speed and brightness.

(7). SD card supports FAT32, FAT16 format, maximum capacity is 64G bytes, stores up to 64 DAT files.

(8).Support Encryption of power-up times.

2. Supported Driver Chips

LPD6803, LPD8806, LPD6812, LPD6813, LPD1882, LPD1889, LPD1883, LPD1886, DMX512, HDMX, APA102, P9813, LD1510, LD1512, LD1530, LD1532, UCS6909, UCS6912, UCS1903, UCS1909, UCS1912, WS2801, WS2803, WS2811, WS2812, DZ2809, SM16716, TLS3001, TLS3002, TM1812, TM1809, TM1804, TM1803, TM1914, TM1926, TM1829, TM1906, INK1003, BS0825, BS0815, BS0901, LY6620, DM412, DM413, DM114, DM115, DM13C, DM134, DM135, DM136, 74HC595, 6B595, MBI6023, MBI6024, MBI5001, MBI5168, MBI5016, MBI5026, MBI5027, TB62726, TB62706, ST2221A, ST2221C, XLT5026, ZQL9712, ZQL9712HV, etc.

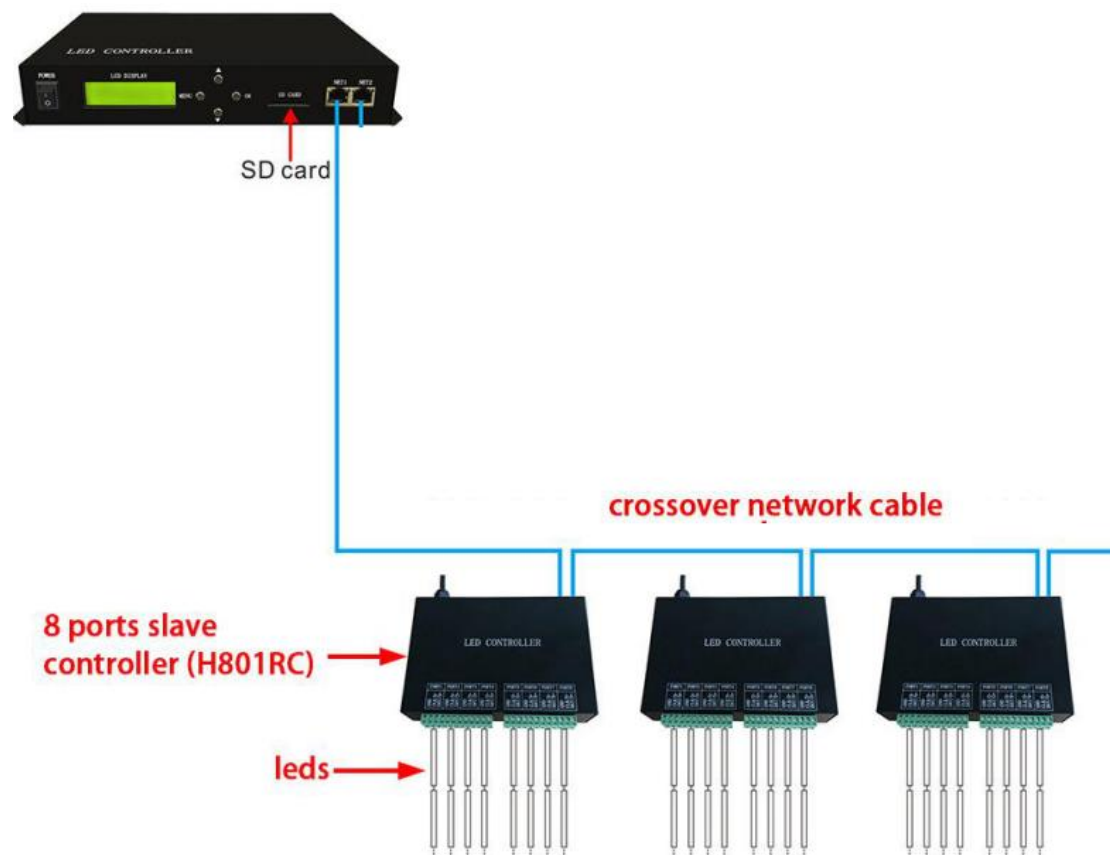
Note: ML-H803TC supports more than the chips listed above(some chips have the same sequence diagram, for example: UCS512, WS2821 and DMX512 have the same protocol, ML-H803TC supports them all).

3. Basic Workflow

Work with SD card(offline)

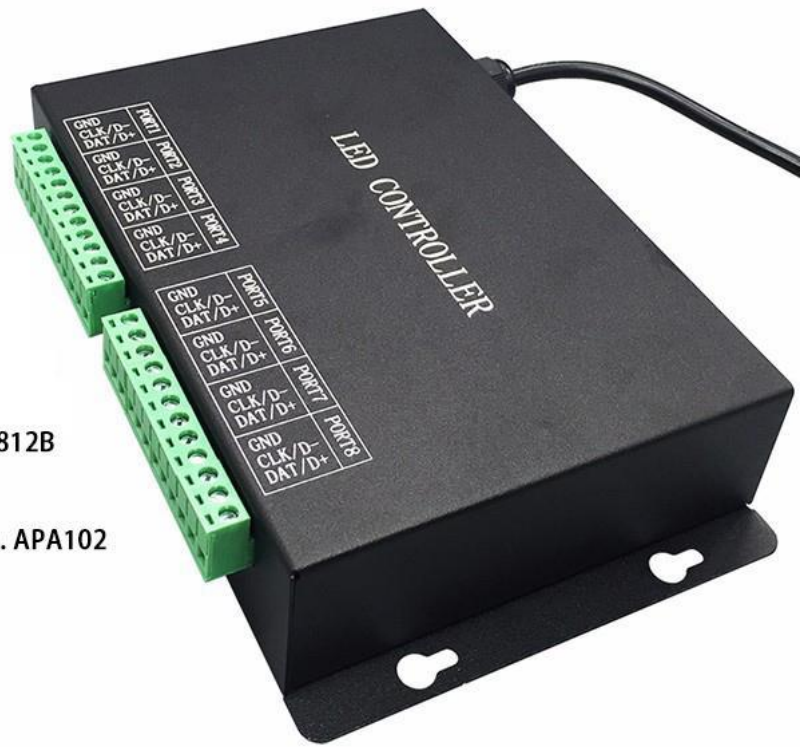
Step1. Connect lights, slave controller and ML-H803TC like the following image.(I didn't draw power supply)

you can only use NET1.



For example:

if you want to control WS2812B strip, just connect GND, DI on strip to GND, DAT on slave controller.



GND, D-, D+ : for DMX512 chips

GND, DAT : for single line chips e.g. WS2812B

GND, CLK, DAT : for double line chips e.g. APA102

Step2. Download and Install LED Build Software

In this mode, you will need LED Build Software.

LED Build Software

Download: <https://drive.google.com/open?id=0B1gzqyV6hfOgUDZ>

BVI84SmRDV28

LED Build Software Tutorial Video:

<https://drive.google.com/open?id=0B1gzqyV6hfOgUnFjeG9EM3VR>

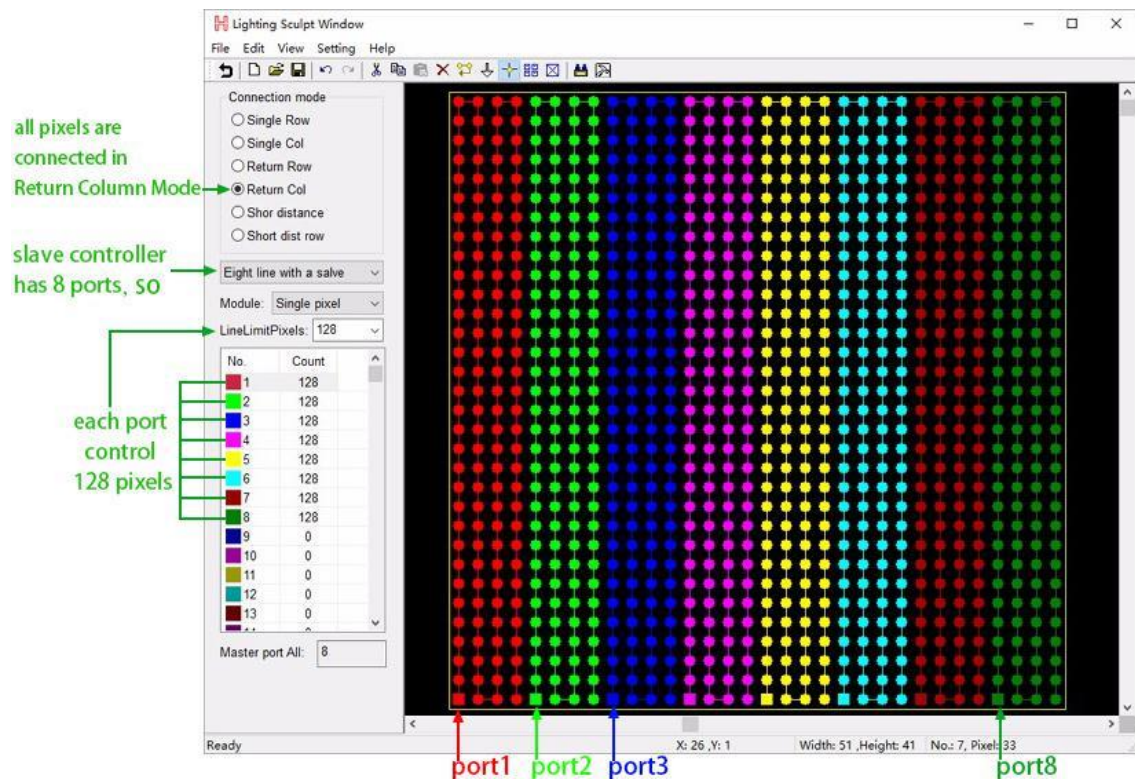
ZjA

Step3. Program in LED Build Software

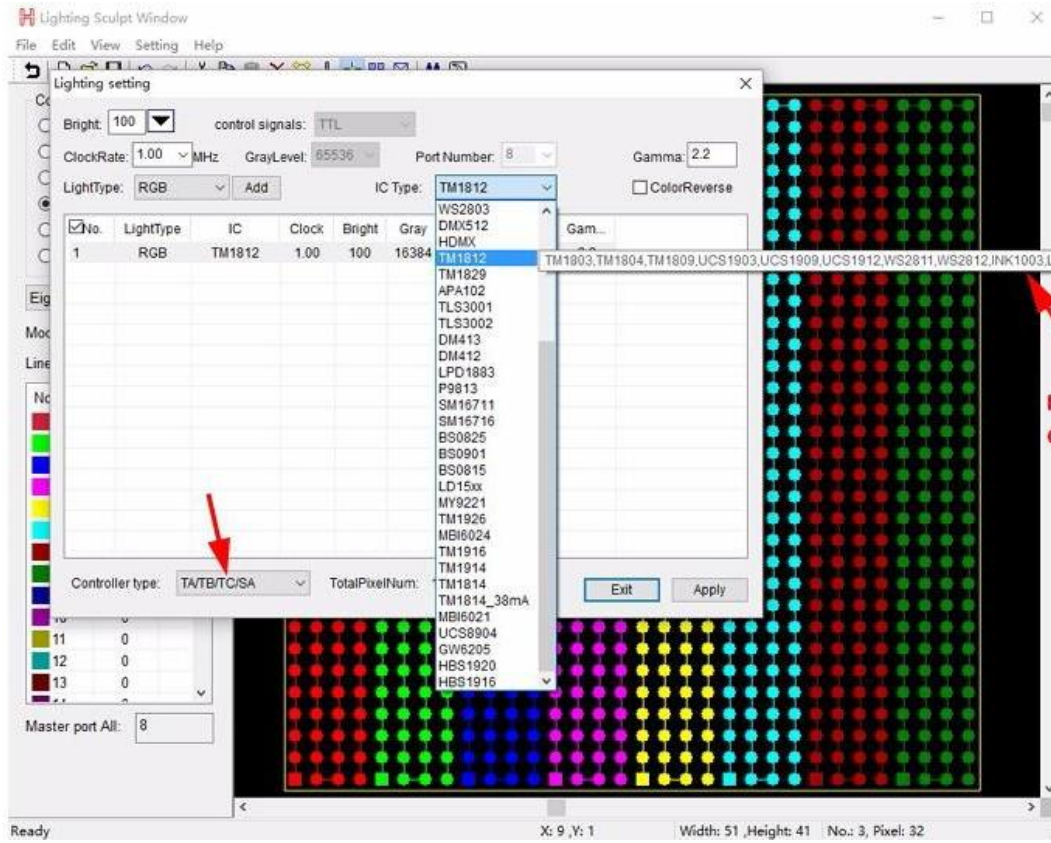
Basic software workflow

1. Place Pixels

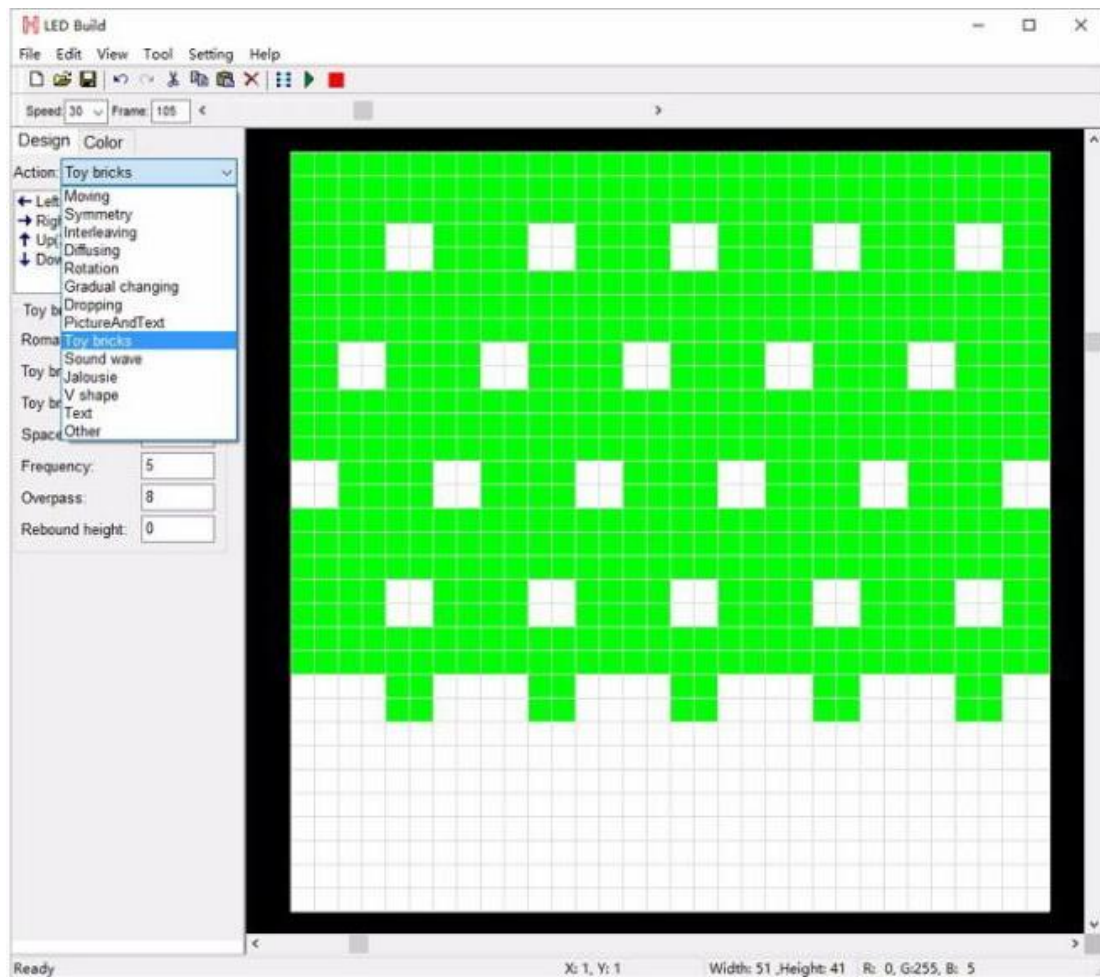
For example there are 1 slave controller(ML-H801RC) connected to ML-H803TC



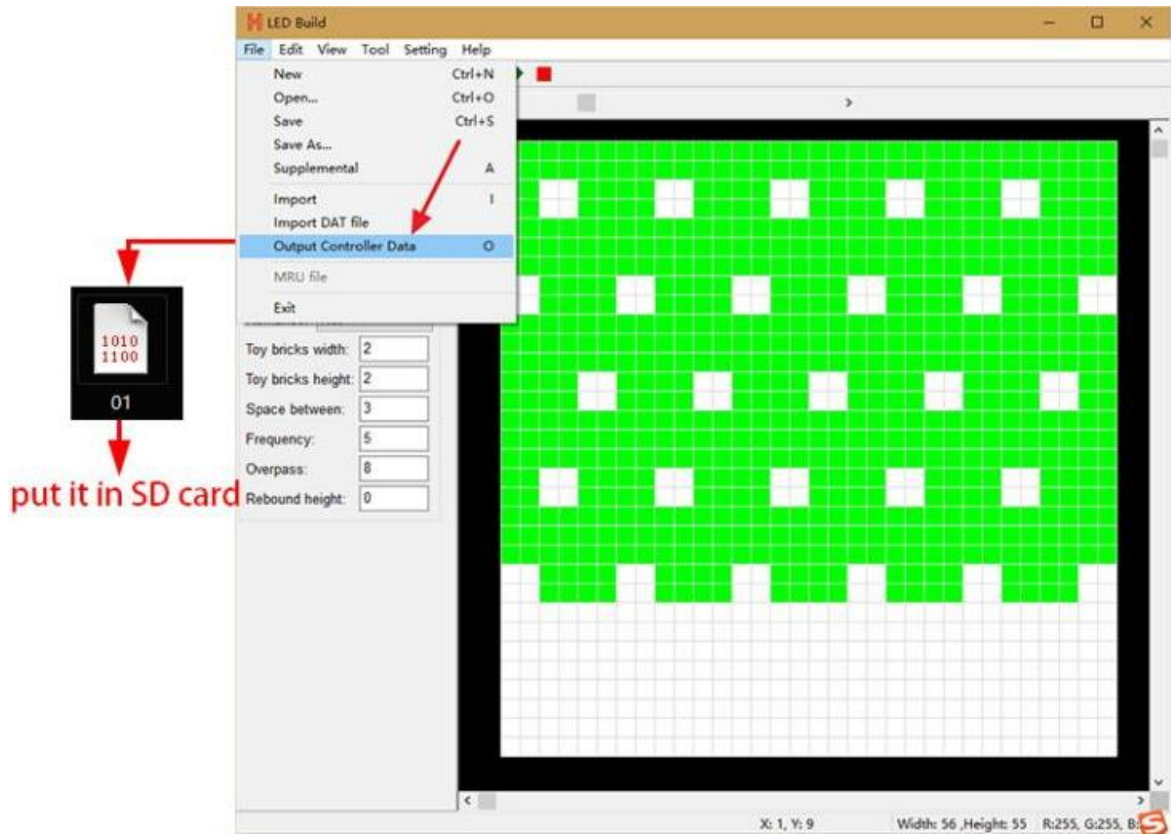
2. Light Setting



3. Make Effects



4. Output controller data and put it into SD card

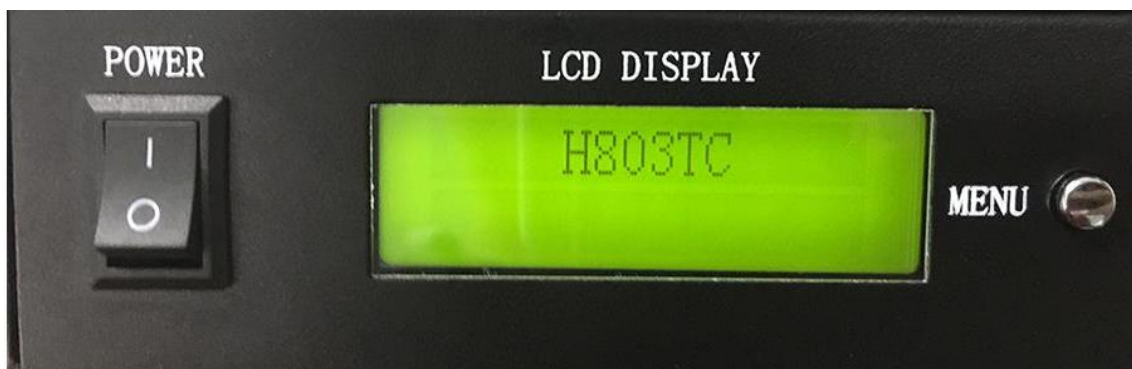


For more details of software operation, please refer to the video post above.

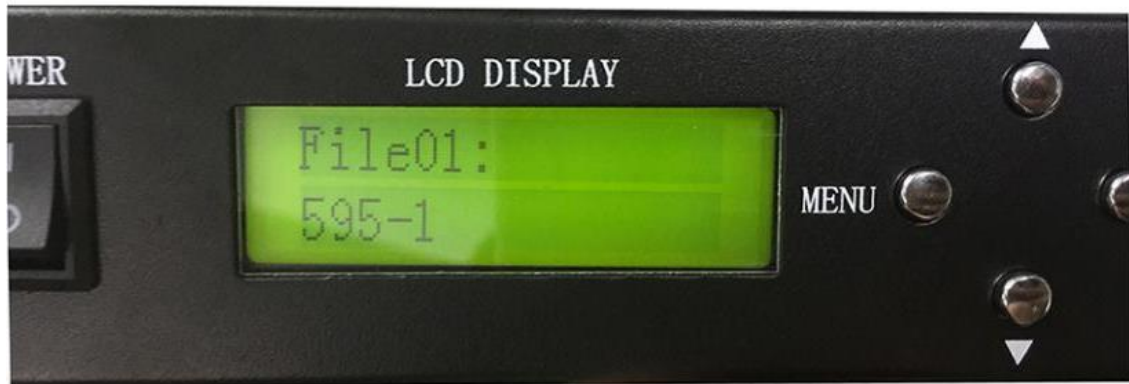
Step4. Configure ML-H803TC with 4 buttons

Power ML-H803TC on

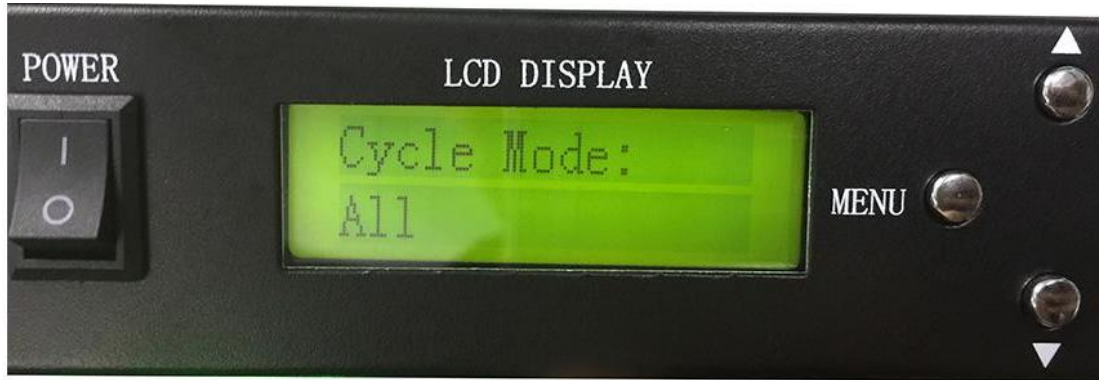
Long press "MENU" button to switch to English



Switch files



Set Playback Mode, press "OK" to save



Set speed, press "OK" to save

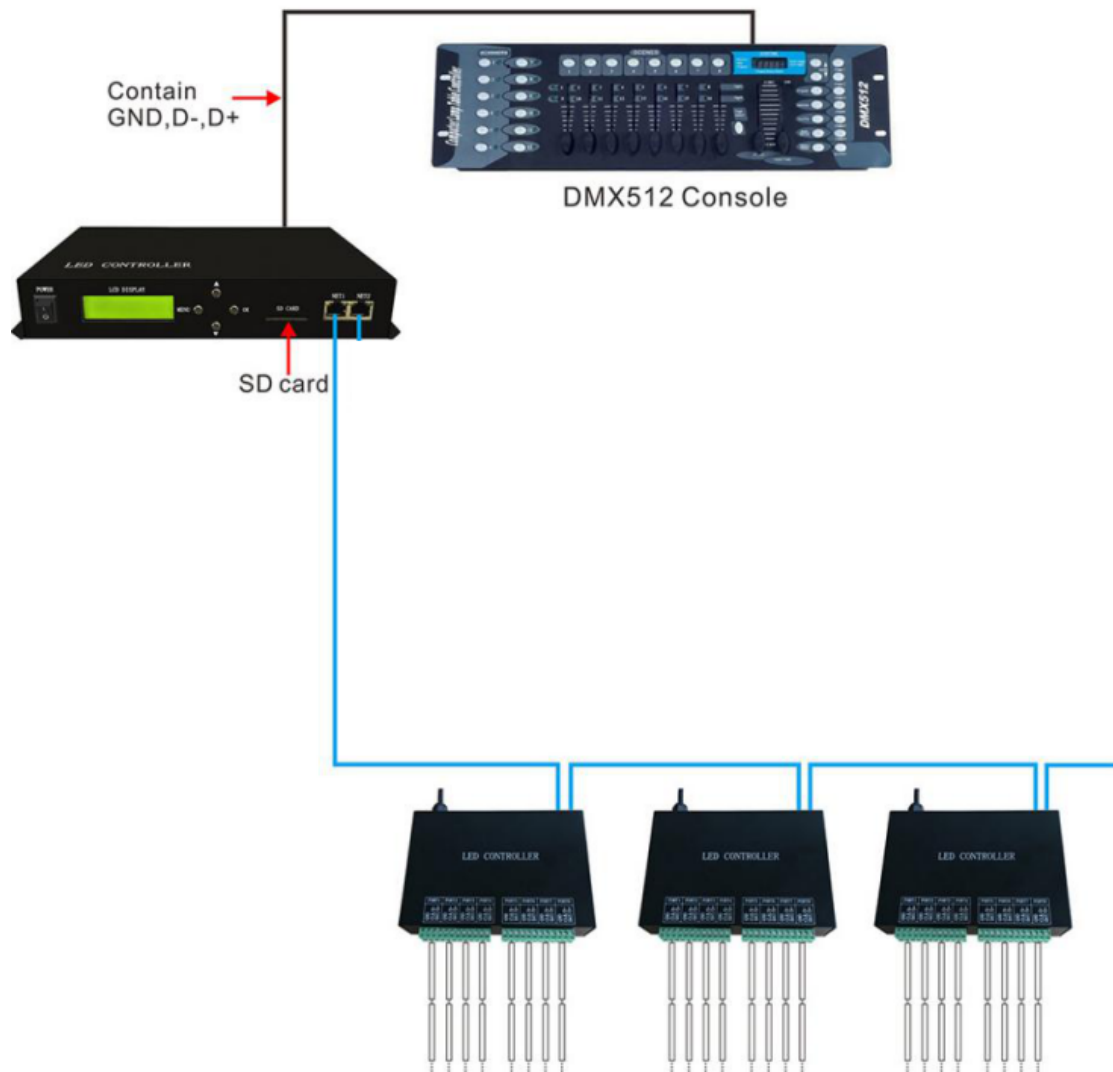


Set brightness



Set DMX Address for ML-H803TC

This function is used when ML-H803TC is connected to DMX console



For example:

If DMX Address is 1, you can use channel 1,2,3 on DMX Console to switch files, change speed and brightness.

If DMX Address is 3, you can use channel 3,4,5 on DMX Console to switch files, change speed and brightness.

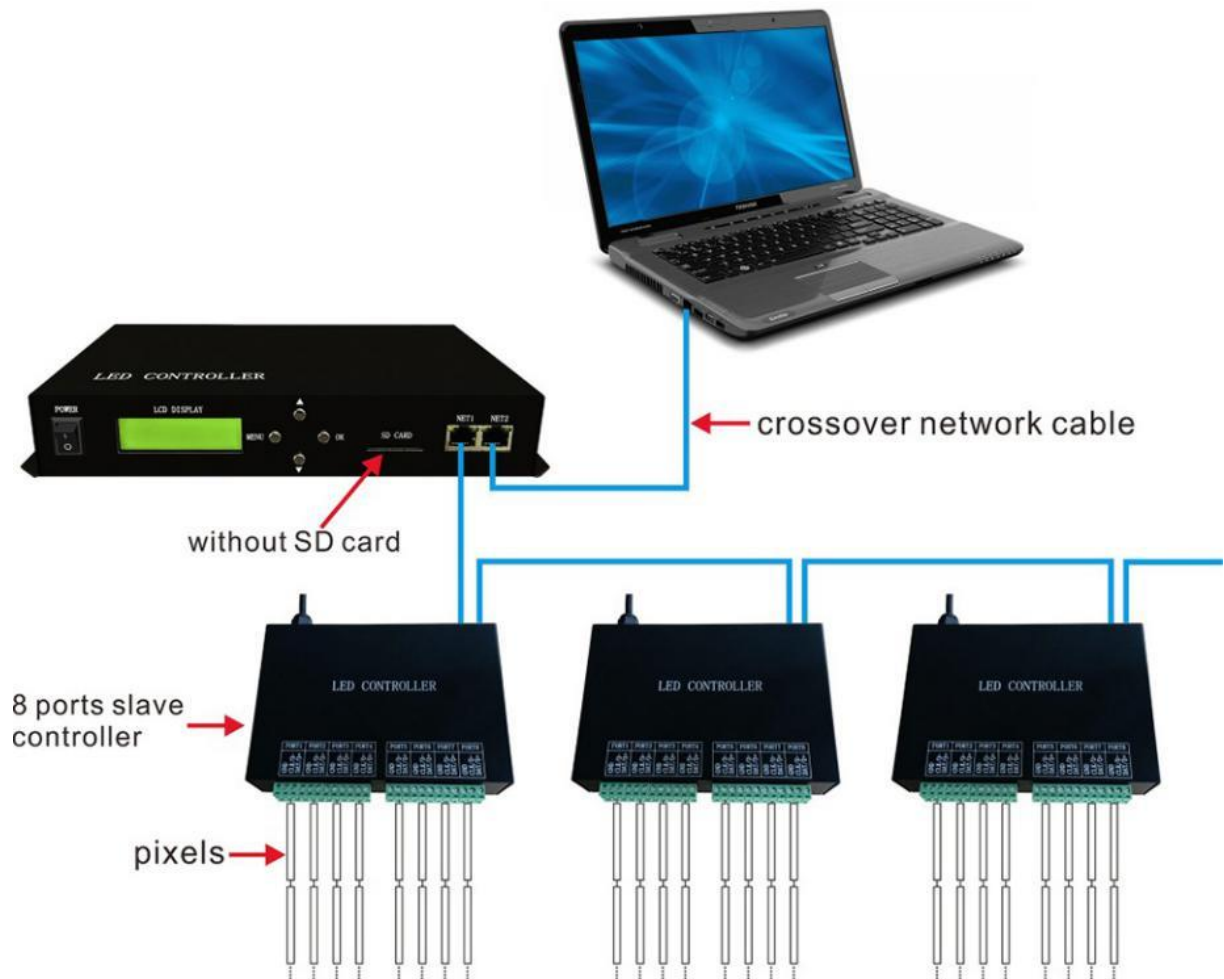
In a word, the DMX Address is the starting channel on DMX Console.

Press "OK" to start addressing.



Work with PC(online)

Step1. Connect lights, slave controllers and ML-H803TC like the following image.



Step2. Download and Install LED Studio Software

In this mode, you will need LED Studio Software.

LED Studio download link:

<https://drive.google.com/open?id=0B1gzqyV6hfOgWFpuM3BoN1V>

aTGs

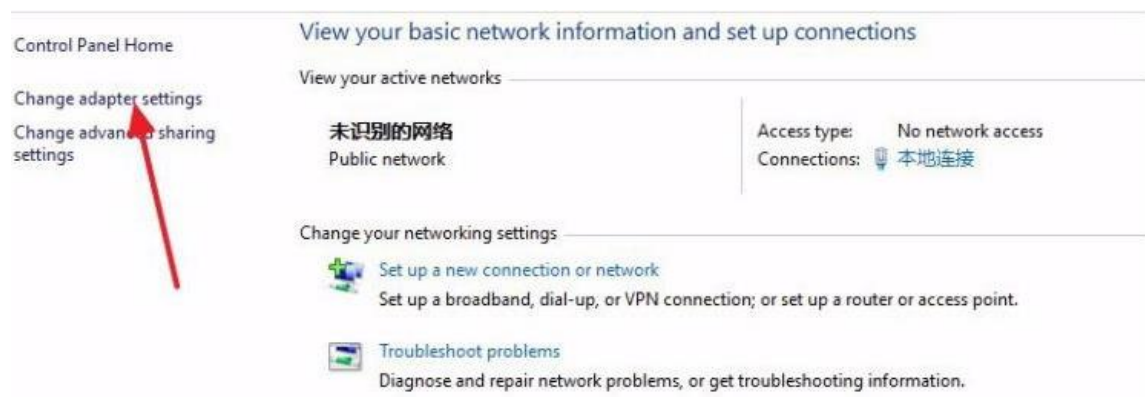
Step3. NET2 Setting

In online mode, NET2 transmits data received from PC to NET1.

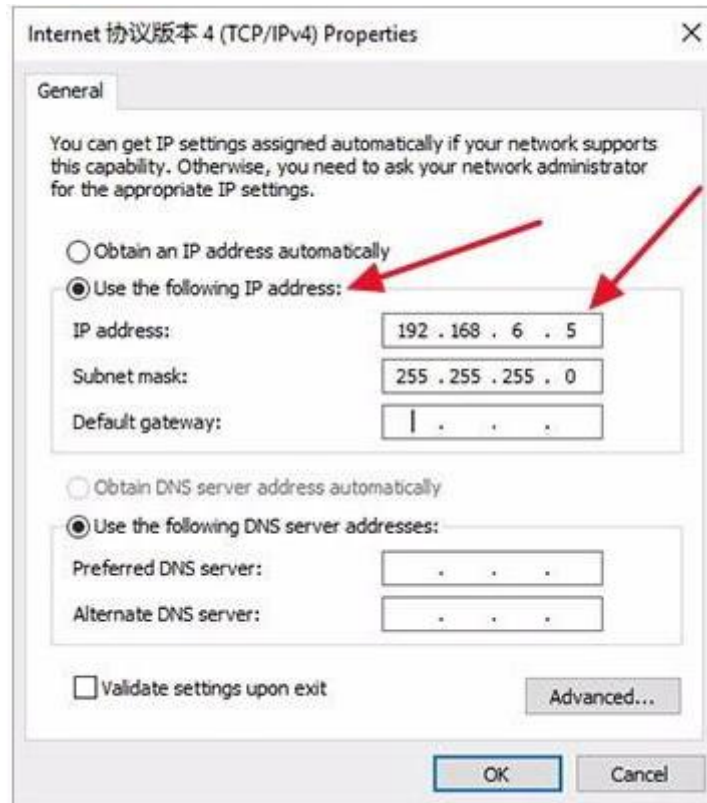


Network Port 2 connects the computer through the network cable, and Network Port 1 connects the decentralized control. Network Port 1 forwards the data received by Network Port 2, which can realize the computer control.

Step4. Allocate an IP address for ML-H803TC







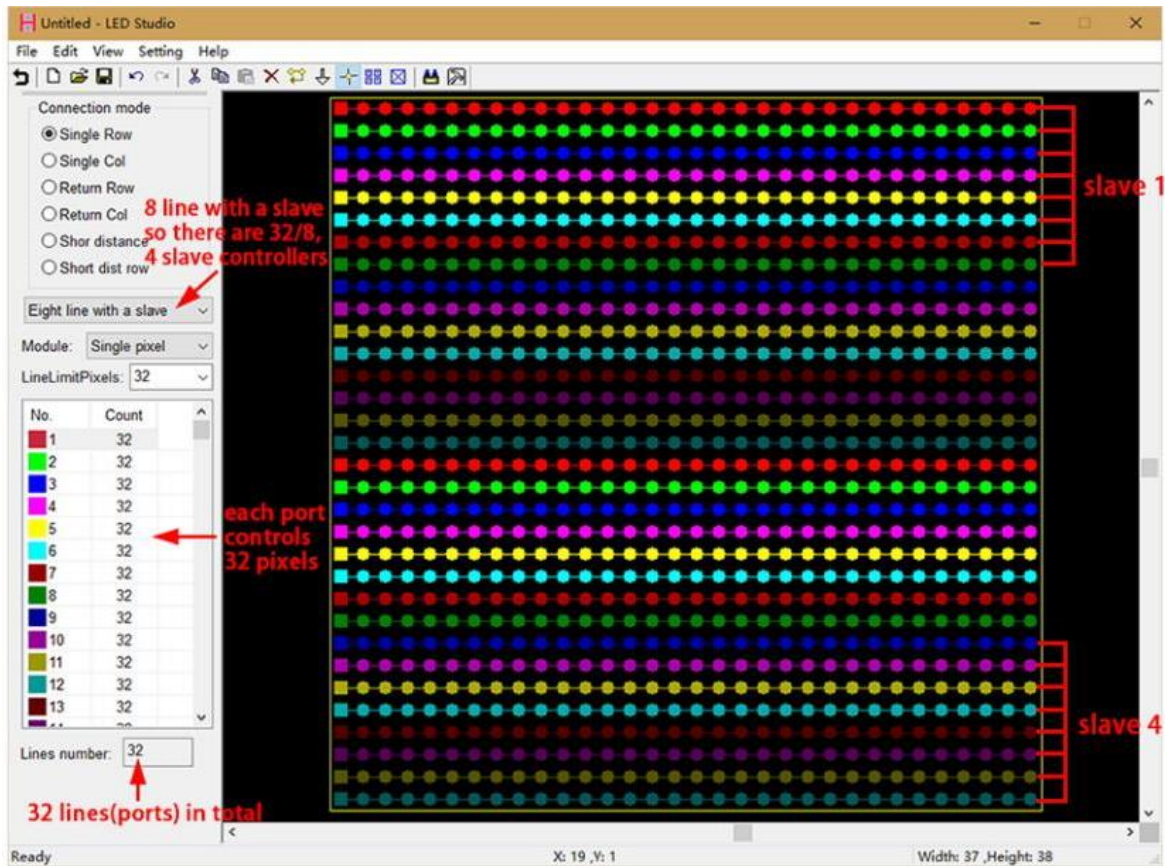
Step5. Program in LED Studio Software

Basic software workflow

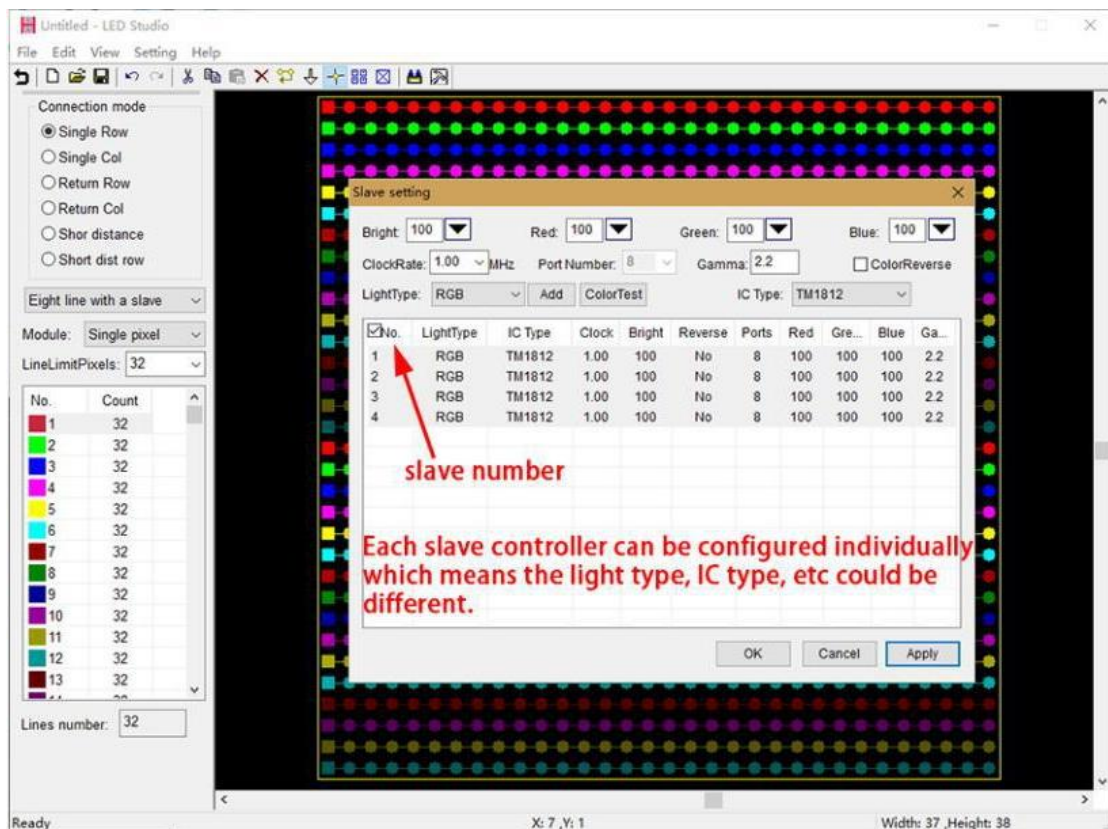
1. Place Pixels

For example there are 4 slave controllers(ML-H801RC) connected to ML-H803TC, 8 ports of ML-H801RC are all connected to leds.

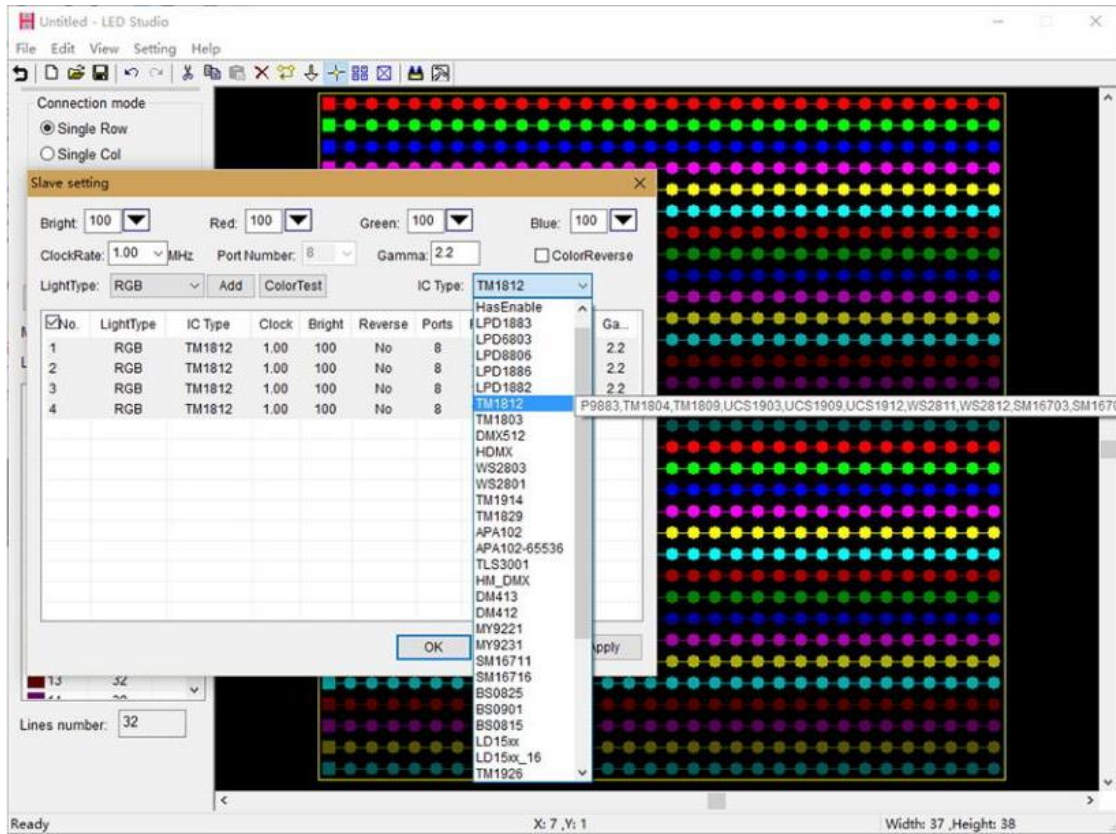
In LED Studio



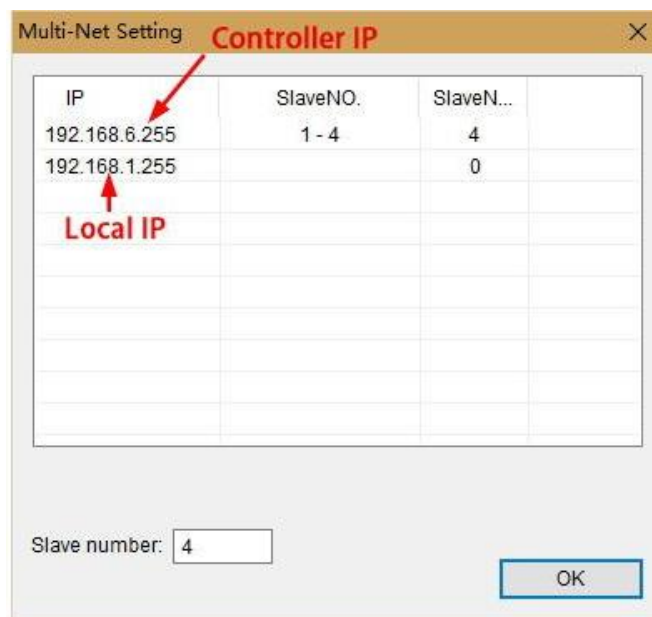
2. Slave Setting



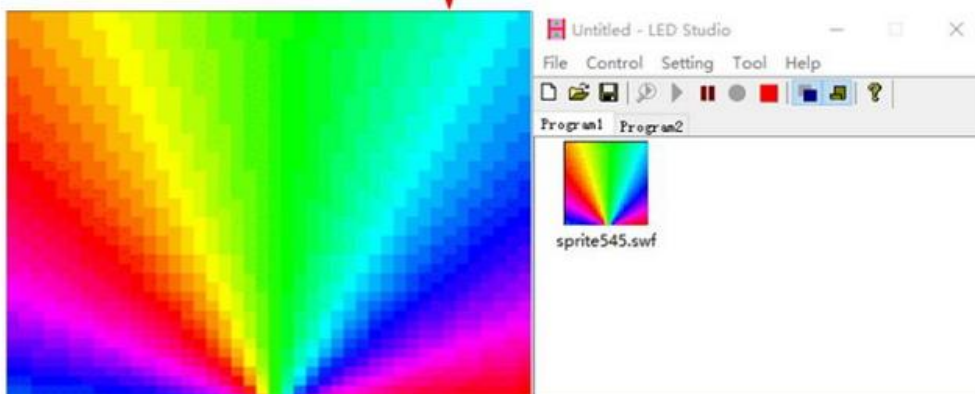
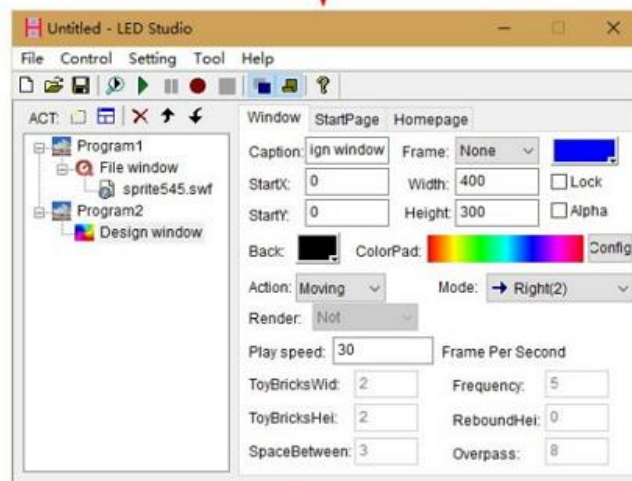
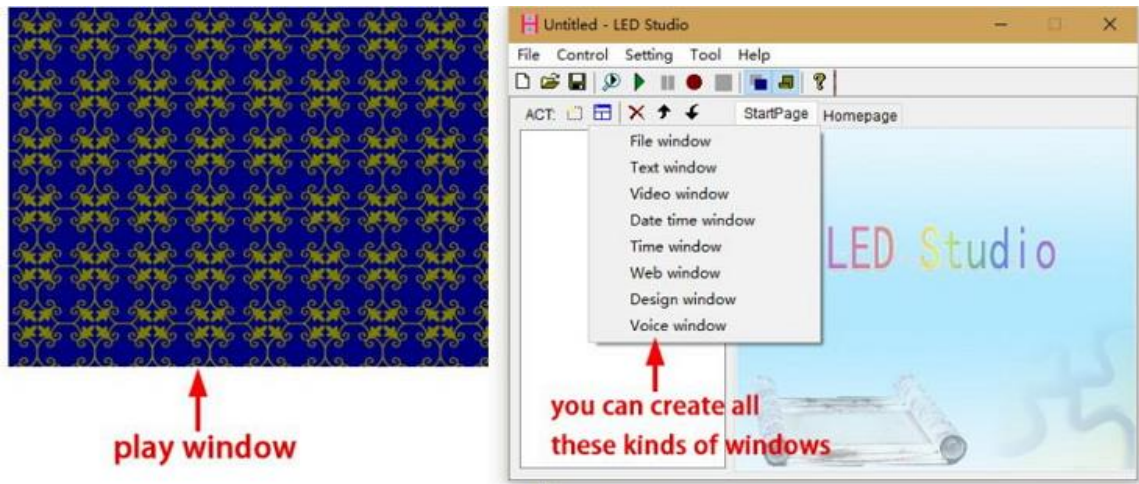
Note: many chips share one option, for example:



3. Multi-Net Setting



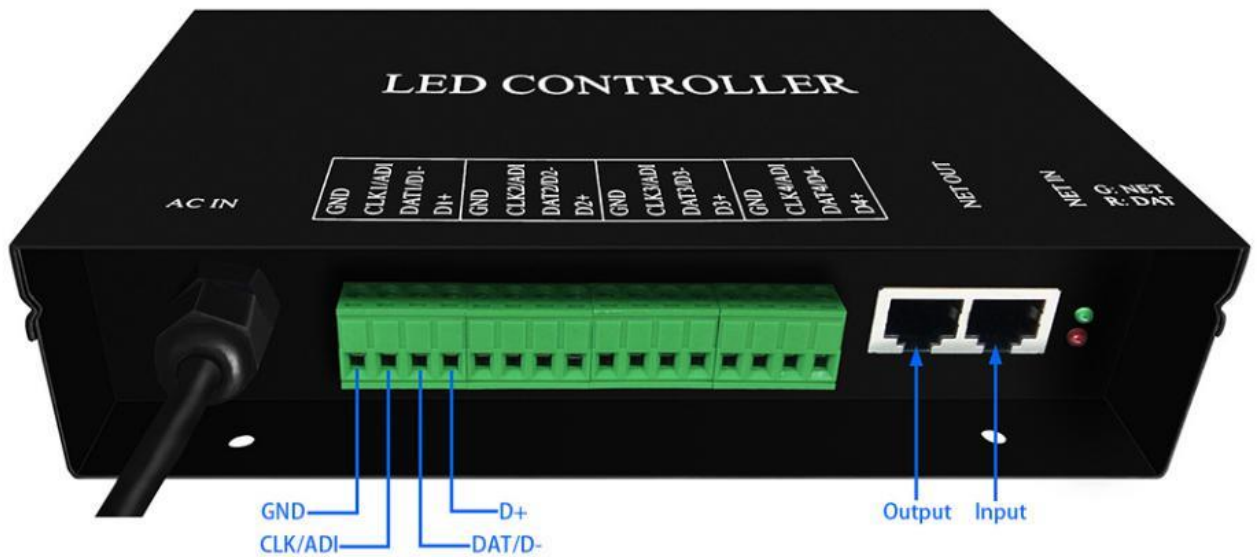
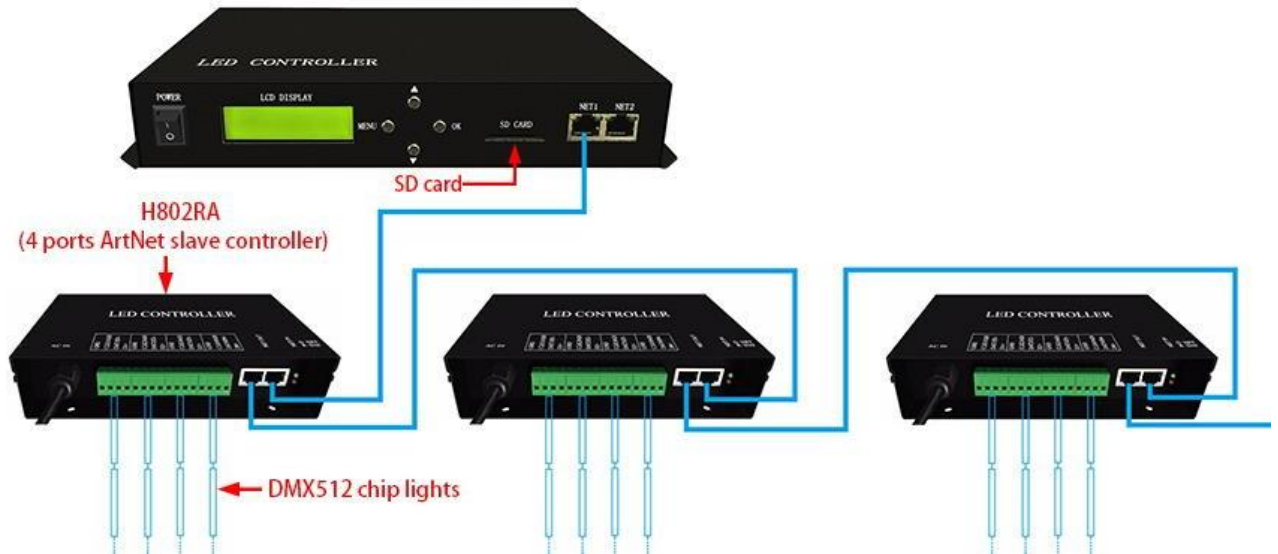
4. Make Effects



4. Control DMX512 chip lights

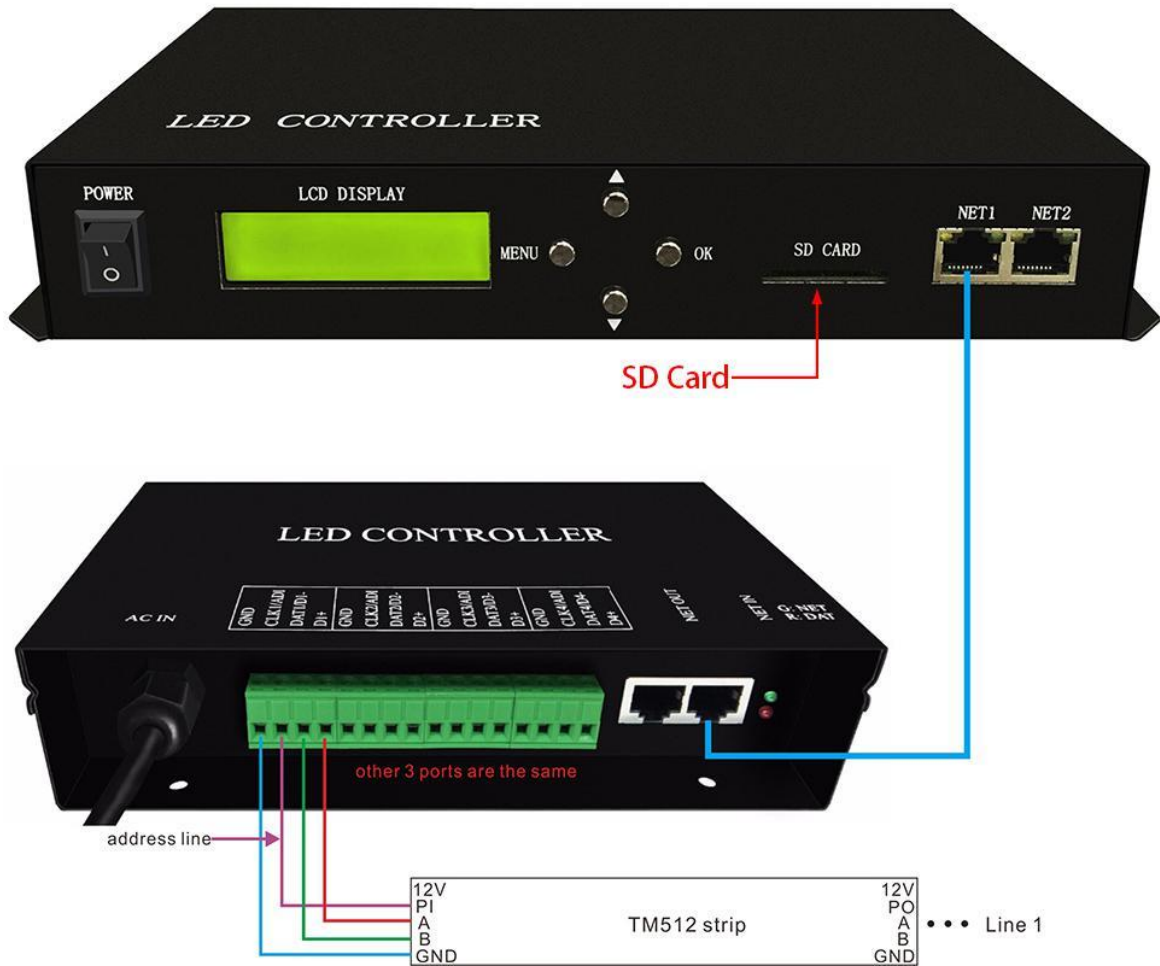
ML-H803TC can control ML-H801RC, H802RA two kinds of slave controllers(they all support DMX512 protocol),

but by using ML-H803TC + H802RA, you can set DMX address for DMX512 chips.



Take TM512 strip for example:

Step1. Set them up



Step2. Set address with four buttons



Choose chip:



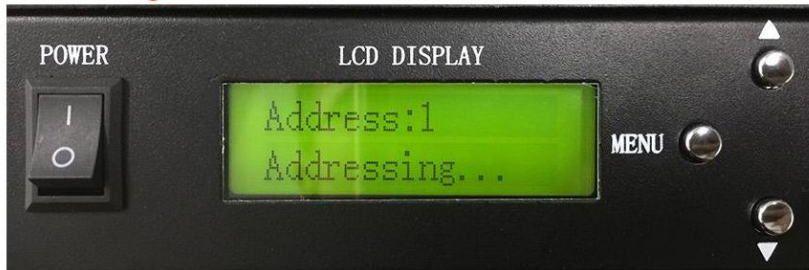
Set channel number of each chip occupies



Set starting address



Addressing



5. 803TC Cloud Control or LAN Control

ML-H803TC LAN Control

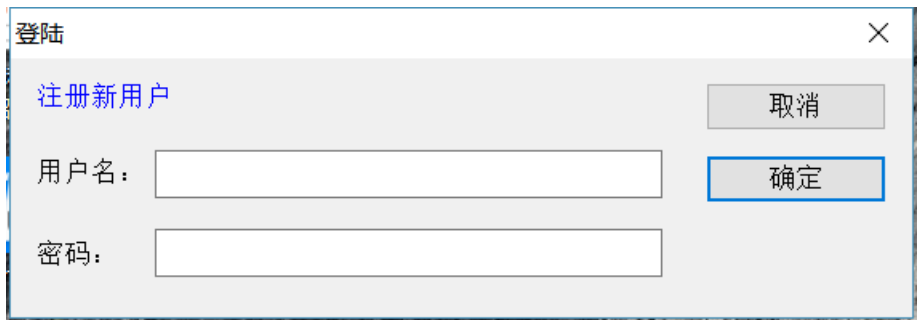


When multiple 803TC ports 2 are connected to the same router to achieve multiple 803TC synchronization, the first 803TC is set to send synchronization of ports 2 to achieve multiple 803TC synchronization.

ML-H803TC Cloud Control



When this mode is set up, the network port 2 connects the router which can be connected to the network, and the network port 1 connects the sub-control. The remote cloud control can be carried out through software LED CLOUD or mobile phone APP. Each 803TC has its own ID code, which requires binding devices when using cloud control.



登陆

注册新用户

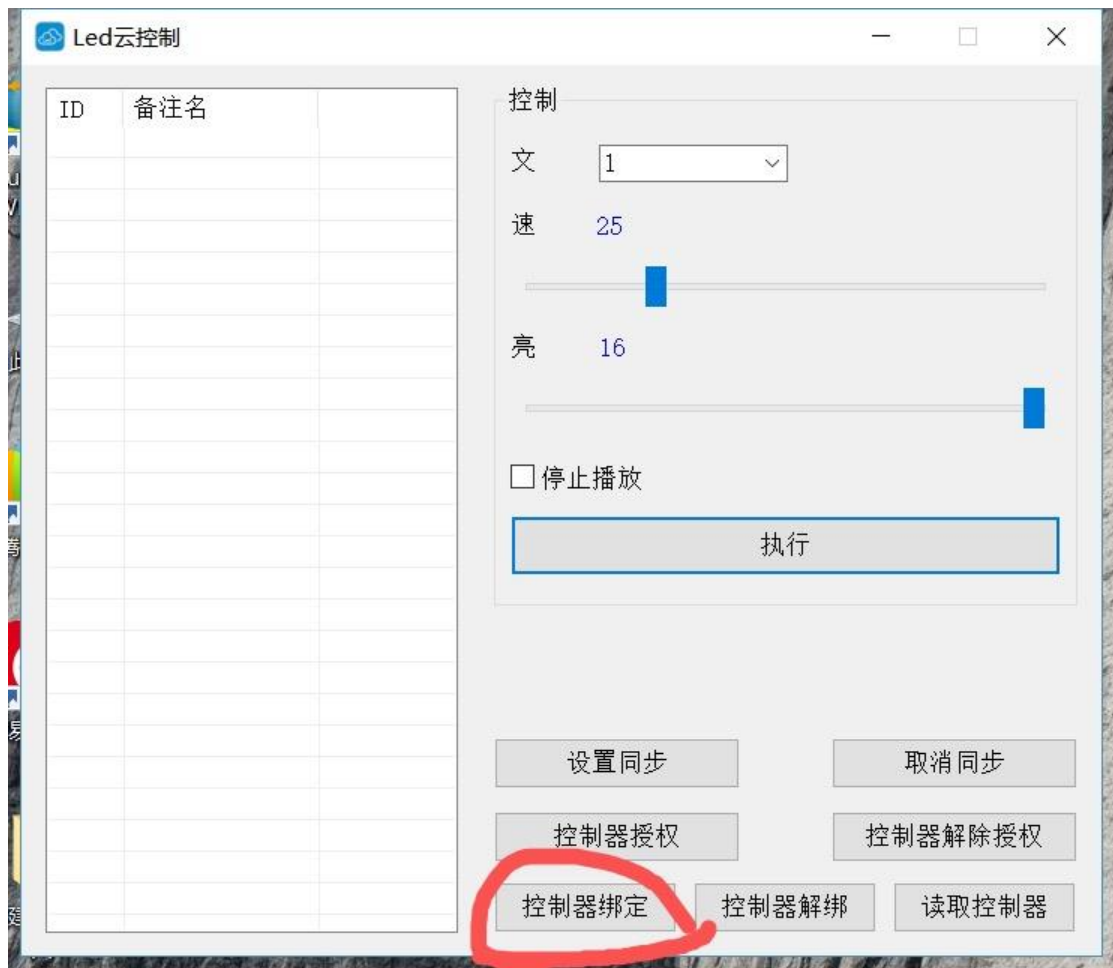
取消

用户名:

确定

密码:

803TC cloud control. When 803TC's gateway 2 is connected to a networked router, open the LED CLOUD software, and no account can be registered.



Led云控制

ID	备注名

控制

文 1

速 25

亮 16

停止播放

执行

设置同步

取消同步

控制器授权

控制器解除授权

控制器绑定

控制器解绑

读取控制器

The login interface is shown in the following figure. Click on the controller binding and enter the ID number of 803TC you are using. **Note: The ID of each 803TC is different. If other users want to use LED CLOUD to control 803TC after binding, they need to authorize the first binding user.**

ID	备注名	

After binding the controller, the device you bind will appear on the left. If you bind more than one controller, it will display more than one controller ID. You can switch files, brightness and speed by clicking.

6.

Input Voltage: Customized

Power Consumption: 1W

Drive Pixels Number: 170000

Weight: 1.1KG